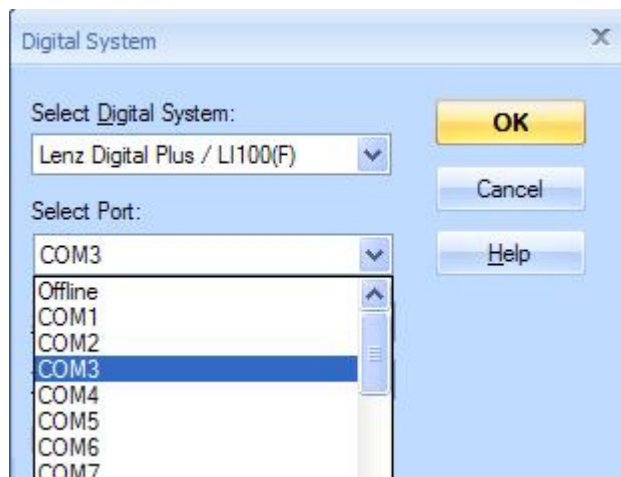


INTERFACE

- download driver: <http://www.ftdichip.com/Drivers/VCP.htm>
- unzip the file to a new folder.
- connect the Interface to a DCC station. Green LED lights.
- connect PC via USB cable (printer cable). Another green LED will be light. Windows detects the new hardware, navigate them to your Folder to install the driver. That is repeated twice.

Train Controller setup:



select port which you use!!!

JRMI setup:

Manufacturer	Lenz
Connection	Lenz LI100
Baud	9600

- the XpressNet address is 29
- the first address of the Feedback module is 65, outputs 1-8. The next is 66.

2 pin socket 5V

The connected Feedback module(s) is powered from the Central station through the XpressNet. Using this terminal you can separate Feedback modules from the Central station and use an external power supply (5V DC).

Jumper function

- position 1 - external power supply mode
- position 2 - normal mode

